



# Technical Information

## Tolerances for connection flanges and installation dimensions for Fabric Expansion Joints

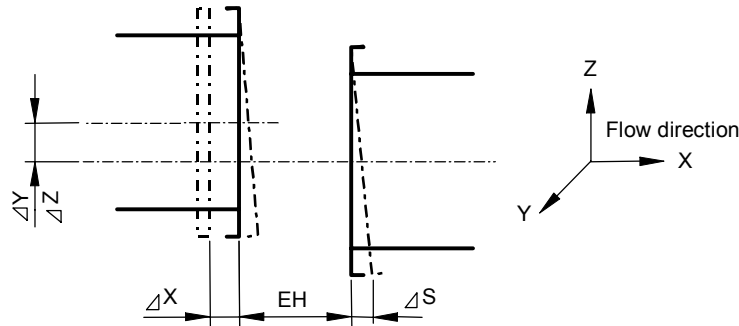
RAL-GZ 719

**TI-013**

Rev. 01/03

page 1 of 2

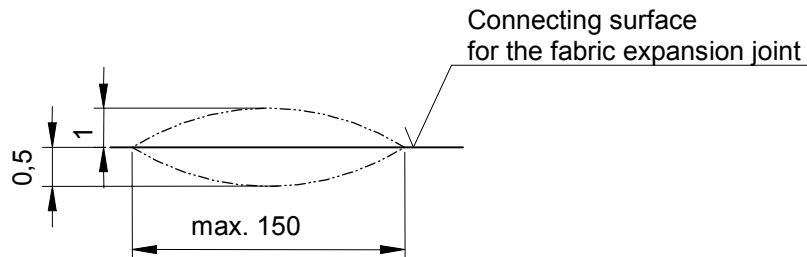
### Max. allowable tolerances for the connection flanges of fabric expansion joints



Installation length [EH]  
axial offset both direction  
misalignment of flanges  
accumulated tolerances

$$\begin{aligned} \Delta X &= -10\text{mm}, +5\text{mm} \\ \Delta Z, \Delta Y &= \pm 10\text{mm} \\ \Delta S &= \pm 7\text{mm} \\ \Sigma &= \sqrt{\max. (\Delta Z^2; \Delta Y^2) + \Delta S^2} + \Delta X = < 10\text{mm} \end{aligned}$$

### Max. allowable tolerances for the connecting surface of fabric expansion joints



Between measured distance of max. 150mm may be either a smooth deepening of 0,5mm or a smooth superelevation of 1mm compared with the theoretical shape.

Waviness of the duct flange max.  $\pm 1\text{mm}$  over a distance of 1000mm

Max. Roughness of flanges  $R_t = 150\mu\text{m}$

Offset is not allowed at the splicing part of the flange area.

The connecting surface must be free of ridge, groove, notch, weld spatter,

Edited by the Quality Committee of the Quality Association for Fabric Expansion Joints



# Technical Information

## Tolerances for connection flanges and installation dimensions for Fabric Expansion Joints

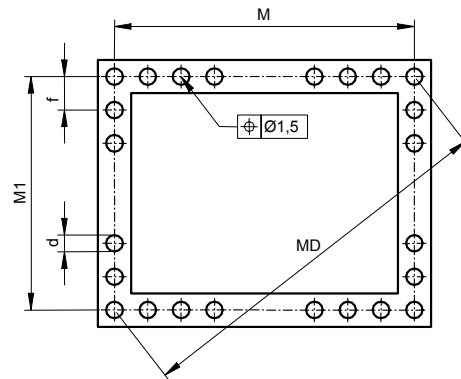
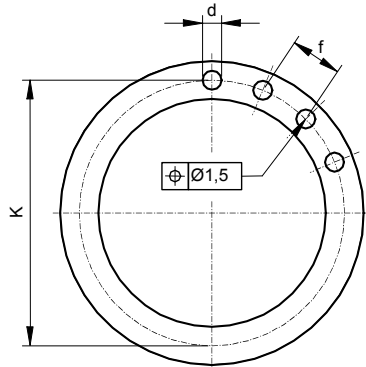
RAL-GZ 719

**TI-013**

Rev. 01/03

page 2 of 2

### Max. allowable tolerances for the hole pattern of fabric expansion joints



Pitch circle diameter <4000mm  
 Pitch circle diameter >4000mm  
 Centre distance <4000mm  
 Centre distance >4000mm  
 Diagonal distance <4000mm  
 Diagonal distance >4000mm  
 Pitch  
 Hole diameter  
 All holes in the connecting flanges must be deburred on both sides.

K = DIN ISO 2768 tolerance class m  
 K = DIN ISO 2768 tolerance class c  
 M, M1 = DIN ISO 2768 tolerance class m  
 M, M1 = DIN ISO 2768 tolerance class c  
 MD = DIN ISO 2768 tolerance class m  
 MD = DIN ISO 2768 tolerance class c  
 f = DIN ISO 2768 tolerance class c  
 d = DIN EN 20273 tolerance class g

### General tolerances

Tolerances for length dimensions (compare DIN ISO 2768 T1)

Tolerance class	>6 <30	>30 <120	>120 <400	>400 <1000	>1000 <2000	>2000 <4000	>4000 <8000	>8000 <12000	>12000 <16000	>16000 <20000
m	±0,2	±0,3	±0,5	±0,8	±1,2	±2	±3	±4	±5	±6
c	±0,5	±0,8	±1,2	±2	±3	±4	±5	±6	±7	±8

Edited by the Quality Committee of the Quality Association for Fabric Expansion Joints

handed over by DEKOMTE de Temple Kompensator-Technik GmbH  
 Tel.: +49 (0) 6182 – 21014 • Fax: +49 (0) 6182 – 2101400 • E-mail: info@dekomte.com