



Technical Information

Expansion joint questionnaire

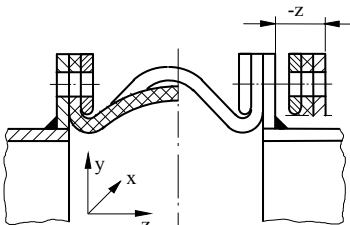
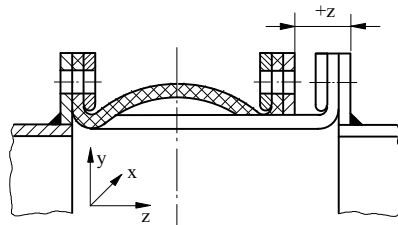
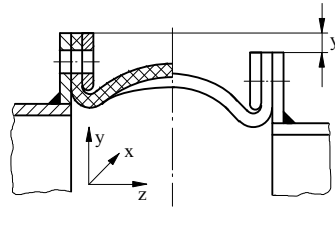
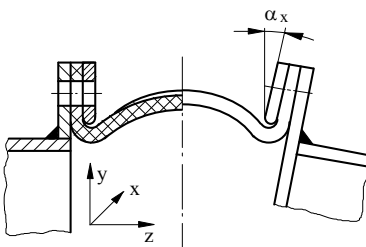
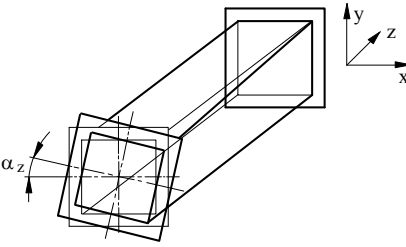
RAL-GZ 719
TI-004
Rev. 0 – 10/98
page 2 of 5

Transient pressure	<input type="checkbox"/> no	<input type="checkbox"/> yes, from ___ mbar to ___ mbar	Frequency: ___
Surge load	<input type="checkbox"/> no	<input type="checkbox"/> yes, from ___ mbar to ___ mbar	Frequency: ___
Excursion pressure: ___ mbar		Neg. exc. pressure: ___ mbar	duration of excursion: ___
Frequency of excursions: ___		per: _____	at a temperature of: ___ °C

4. Specified tightness

without
 flue gas tight acc. to TI-002
 nekal tight acc. to TI-003

5. Movements

<p>Axial compression</p>  <p>- z : ___ mm</p>	<p>Axial elongation</p>  <p>+ z : ___ mm</p>	<p>Lateral offset</p>  <p>x : ___ mm y : ___ mm</p>
<p>Angular movement</p>  <p>α_x : ___ ° α_y : ___ °</p>	<p>Torsion</p>  <p>α_z : ___ °</p>	<p>Vibration</p> <p><input type="checkbox"/> no <input type="checkbox"/> yes</p> <p>frequency : ___ s⁻¹</p> <p>amplitude : ___ m</p>

6. Design

Type of connection tubular connection flange connection
 Delivery open endless

Edited by the Quality Committee of the Quality Association for Fabric Expansion Joints

handed over by DEKOMTE de Temple Kompensator-Technik GmbH
 Tel.: +49 (0) 6182 – 21014 • Fax: +49 (0) 6182 – 2101400 • E-mail: info@dekomte.com



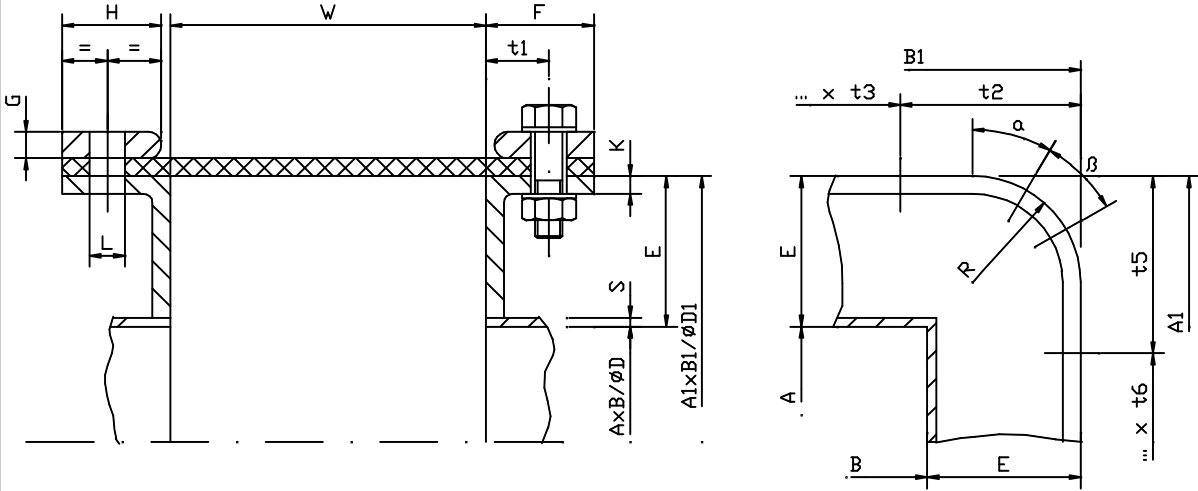
Technical Information

Expansion joint questionnaire

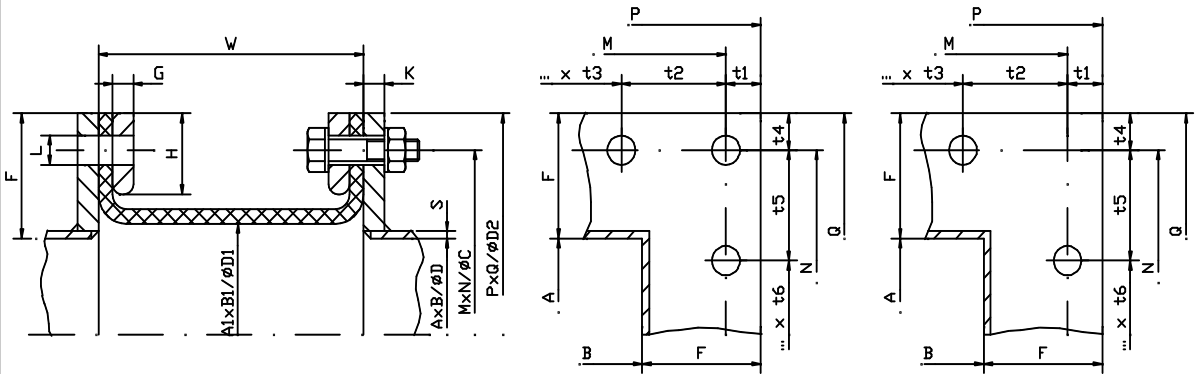
RAL-GZ 719
TI-004
 Rev. 0 – 10/98
 page 3 of 5

Baffle/sleeve no yes: welded bolted
 Insulation between expansion joint and baffle/sleeve yes no

Tubular connection



Flange connection with hole in the edge without hole in the edge



Rectangular

Round

AxB inner duct dimension	A : _____ mm	D inner duct diameter	D : _____ mm
	B : _____ mm		
A1xB1 inner dimension of the expansion joint	A1 : _____ mm	D1 inner diameter of the expansion joint	D1 : _____ mm
	B1 : _____ mm		
E set back	E : _____ mm	E set back	E : _____ mm
F flange height/width	F : _____ mm	F flange height/width	F : _____ mm
G counter flange thickness	G : _____ mm	G counter flange thickness	G : _____ mm

Edited by the Quality Committee of the Quality Association for Fabric Expansion Joints

All kinds of copies, even in extracts, are only allowed with authorization of the Quality Association for Fabric Expansion Joints or one of its members

handed over by DEKOMTE de Temple Kompensator-Technik GmbH
 Tel.: +49 (0) 6182 – 21014 • Fax: +49 (0) 6182 – 2101400 • E-mail: info@dekomte.com



Technical Information

Expansion joint questionnaire

RAL-GZ 719
TI-004
 Rev. 0 – 10/98
 page 4 of 5

H counter flange width	H	: _____	mm	H counter flange width	H	: _____	mm
K flange thickness	K	: _____	mm	K flange thickness	K	: _____	mm
L bolt hole diameter	L	: _____	mm	L bolt hole diameter	L	: _____	mm
MxN hole line distance	M	: _____	mm	C bolt pitch	C	: _____	mm
	N	: _____	mm	N number of holes	N	: _____	
PxQ outer dimension	P	: _____	mm	D2 outer diameter	D2	: _____	mm
	Q	: _____	mm				
R radius	R	: _____	mm				
S duct wall thickness	S	: _____	mm	S duct wall thickness	S	: _____	mm
W flange distance	W	: _____	mm	W flange distance	W	: _____	mm
t1 distance (round / rect.)	t1	: _____	mm	t4 distance (only rect.)	t4	: _____	mm
t2 distance (only rect.)	t2	: _____	mm	t5 distance (only rect.)	t5	: _____	mm
t3 distance (only rect.)	t3	: _____	mm	t6 distance (only rect.)	t6	: _____	mm
m number of holes	m	: _____		n number of holes	n	: _____	
α angle	α	: _____	°	β angle	β	: _____	°

7. Scope of supply

- Expansion joint
- Internal insulation
- Counter flanges/tension strips
- Duct flanges
- Bolting
- Baffle/sleeve
- Baffle/sleeve gasket

- supplied in parts
- supplied pre-assembled

- On site measurement
- Mounting
- Supervision

8. Other details

Edited by the Quality Committee of the Quality Association for Fabric Expansion Joints

handed over by DEKOMTE de Temple Kompensator-Technik GmbH
 Tel.: +49 (0) 6182 – 21014 • Fax: +49 (0) 6182 – 2101400 • E-mail: info@dekomte.com



Technical Information

Expansion joint questionnaire

RAL-GZ 719
TI-004
Rev. 0 – 10/98
page 5 of 5

9. Sketch/Drawing

Sketch/drawing enclosed yes no

Drawing No.

Remark: State full and precise details for your safety

_____ Place

_____ Date

_____ Signature

Edited by the Quality Committee of the Quality Association for Fabric Expansion Joints

All kinds of copies, even in extracts, are only allowed with authorization of the Quality Association for Fabric Expansion Joints or one of its members

handed over by DEKOMTE de Temple Kompensator-Technik GmbH
Tel.: +49 (0) 6182 – 21014 • Fax: +49 (0) 6182 – 2101400 • E-mail: info@dekomte.com